

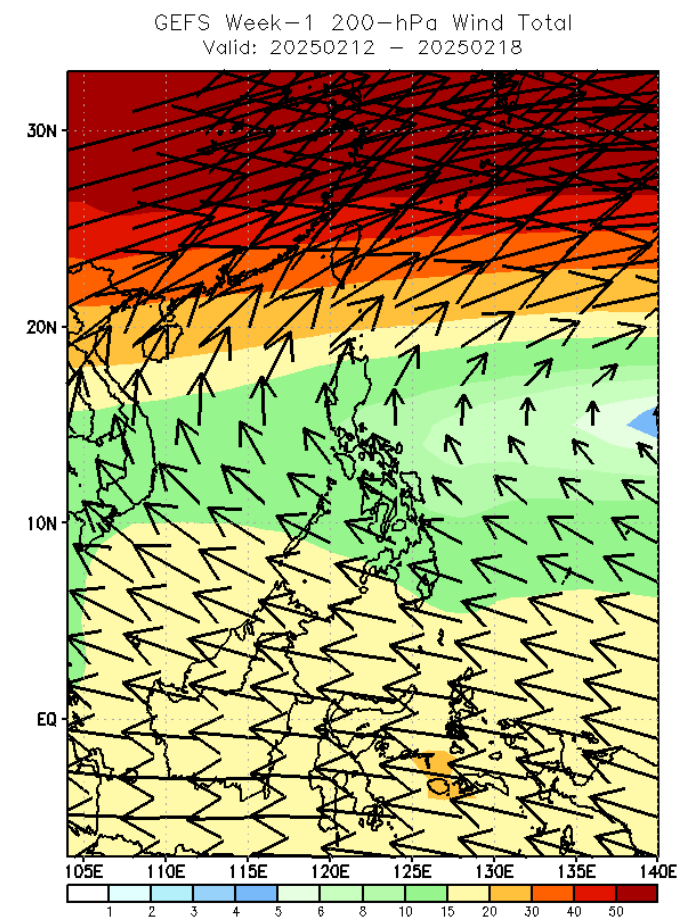
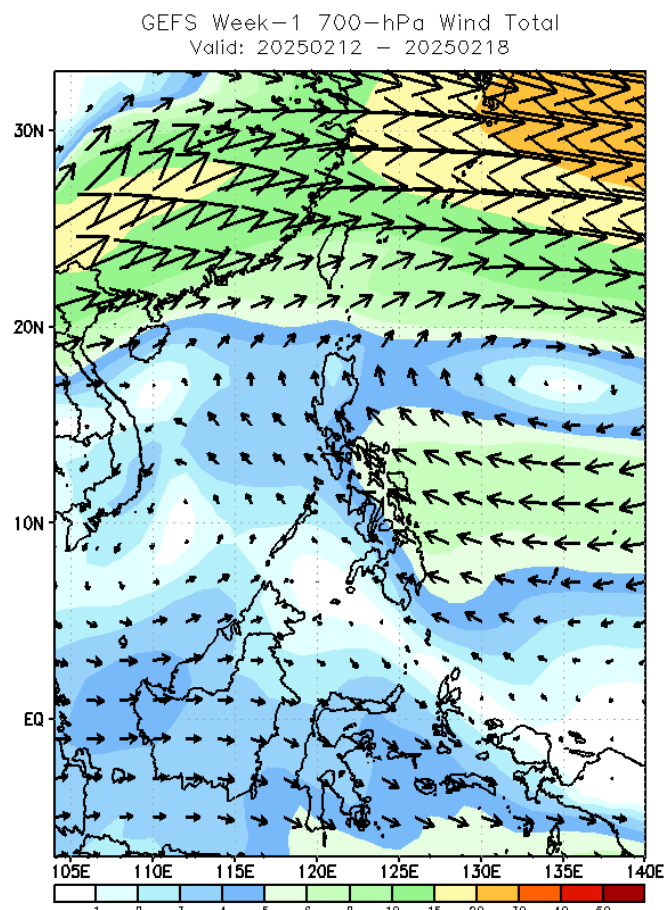
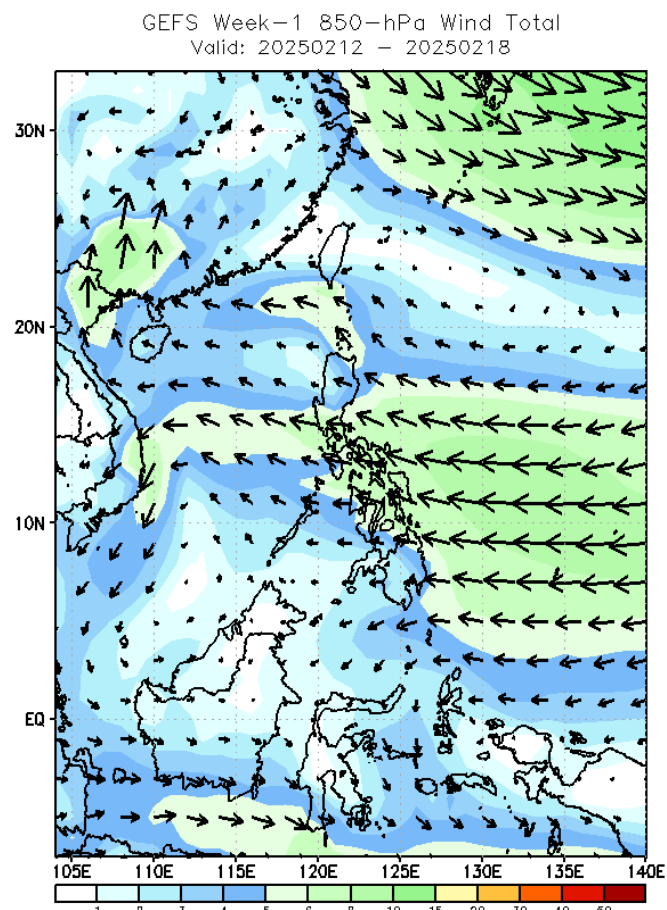


# Week 1 & Week 2 Forecast for the Philippines using GEFS Model



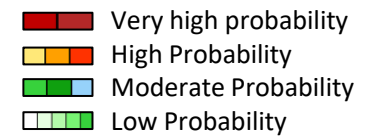
# GEFS Week-1 Wind Forecasts:

Week 1: Feb 12-18, 2025



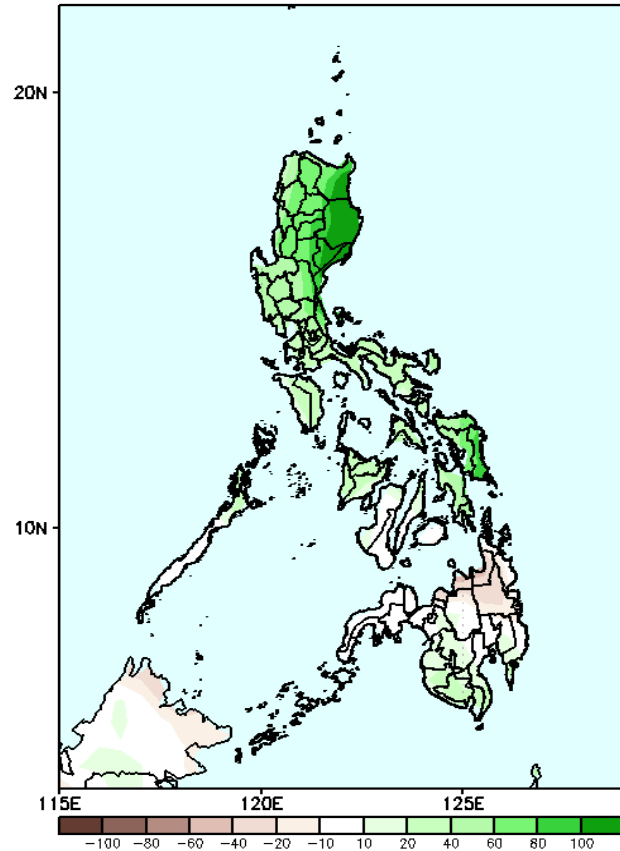
Northeast Monsoon affecting Northern Luzon while Easterlies affecting the rest of the country during the forecast period

# Precipitation Anomaly and Exceedance Probability > 25/50 mm

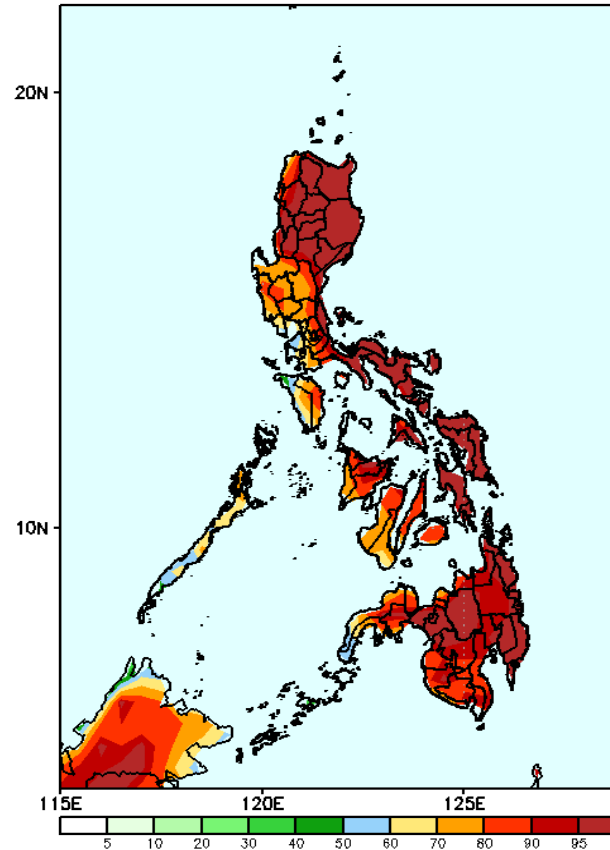


## Week 1: Feb 12-18, 2025

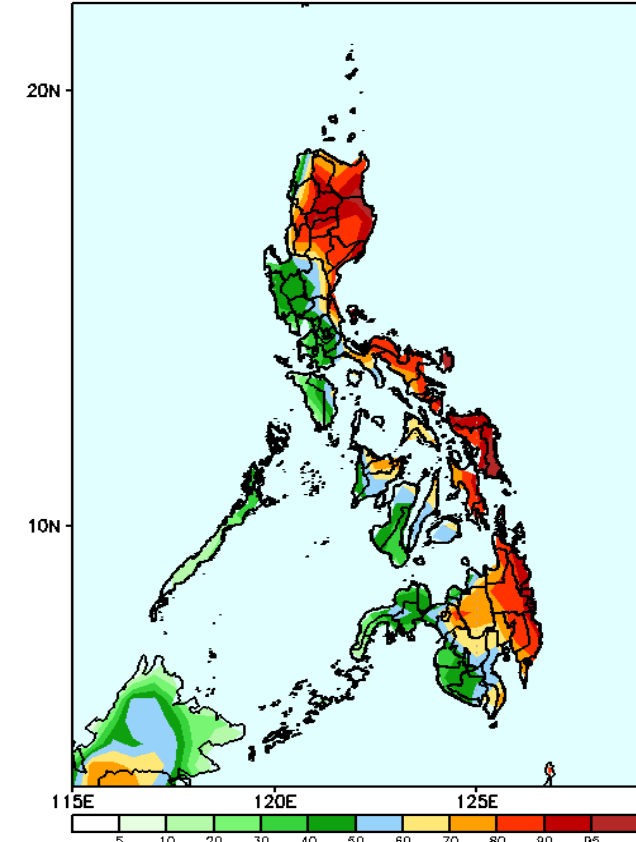
GEFS Week-1 Precip Anomaly  
Valid: 20250212 - 20250218



GEFS Week-1 Exceedance Prob. > 25mm  
Valid: 20250212 - 20250218



GEFS Week-1 Exceedance Prob. > 50mm  
Valid: 20250212 - 20250218



Increase of rainfall of 40-80mm is expected in most parts of the country expect for 20-40mm decrease in rainfall in Caraga and Misamis Oriental.

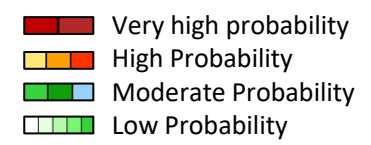
### Probability to Exceed 25mm

- High to very high over most parts of the country;
- Moderate to high over Cavite, Batangas and MIMAROPA.

### Probability to Exceed 50mm

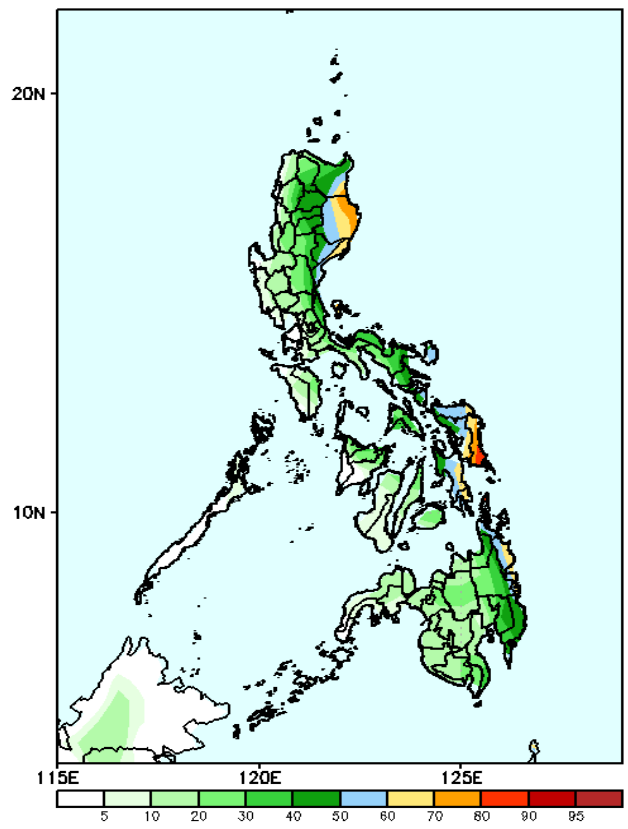
- High to very high over most of Northern Luzon, Aurora, Quezon, Bicol Region, Eastern Visayas, and Eastern Mindanao;
- Moderate to high over the rest of Northern Luzon, Central Luzon, Rizal, Laguna, and the rest of Visayas and Mindanao;
- Low to moderate over the rest of Southern Luzon.

# Exceedance Probability > 100/150/200 mm



## Week 1: Feb 12-18, 2025

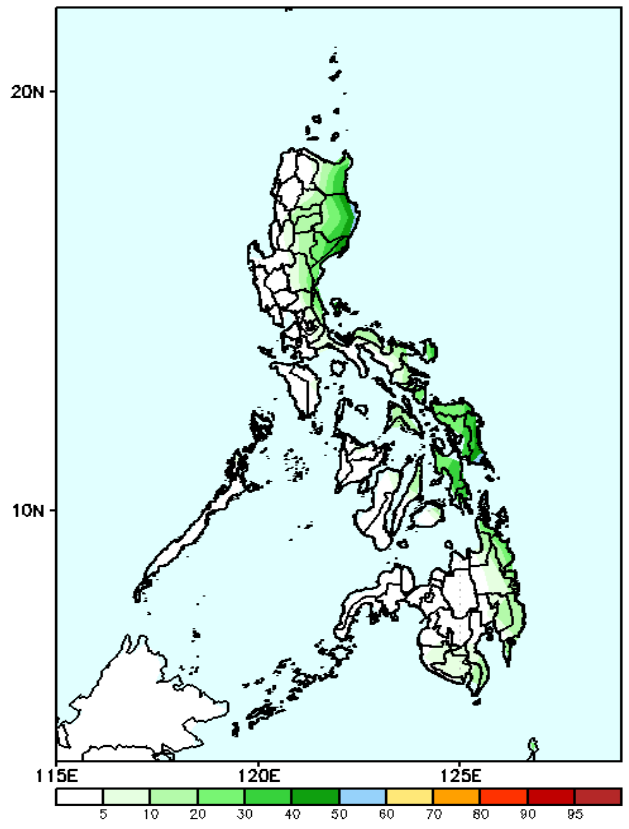
GEFS Week-1 Exceedance Prob. > 100mm  
Valid: 20250212 - 20250218



### Probability to Exceed 100mm

- Moderate to high over the eastern sections of Cagayan, Isabela, and Quirino, Aurora, Eastern Visaya,s and Surigao Provinces;
- Low to moderate over the rest of the country.

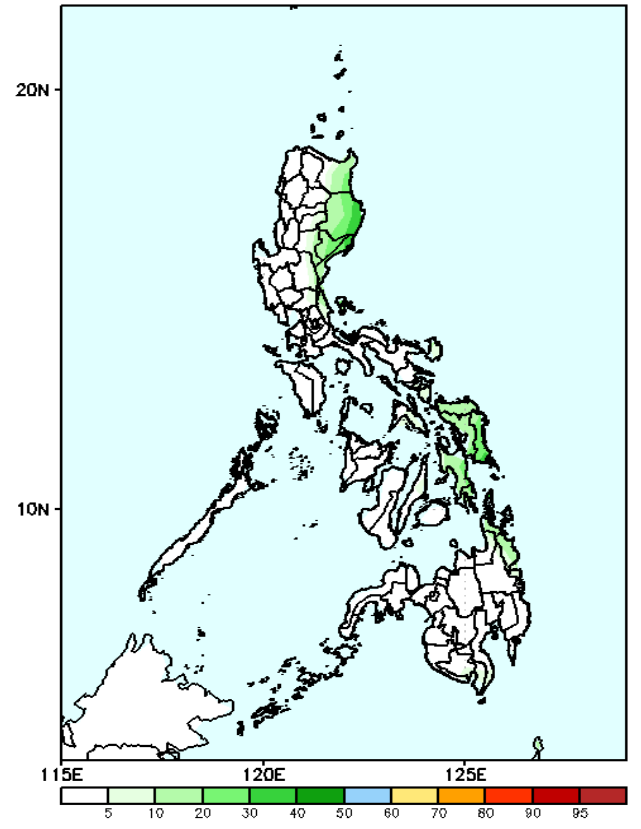
GEFS Week-1 Exceedance Prob. > 150mm  
Valid: 20250212 - 20250218



### Probability to Exceed 150mm

- Low to moderate over the eastern sections of Luzon and Visayas;
- Low over the rest of the country;

GEFS Week-1 Exceedance Prob. > 200mm  
Valid: 20250212 - 20250218



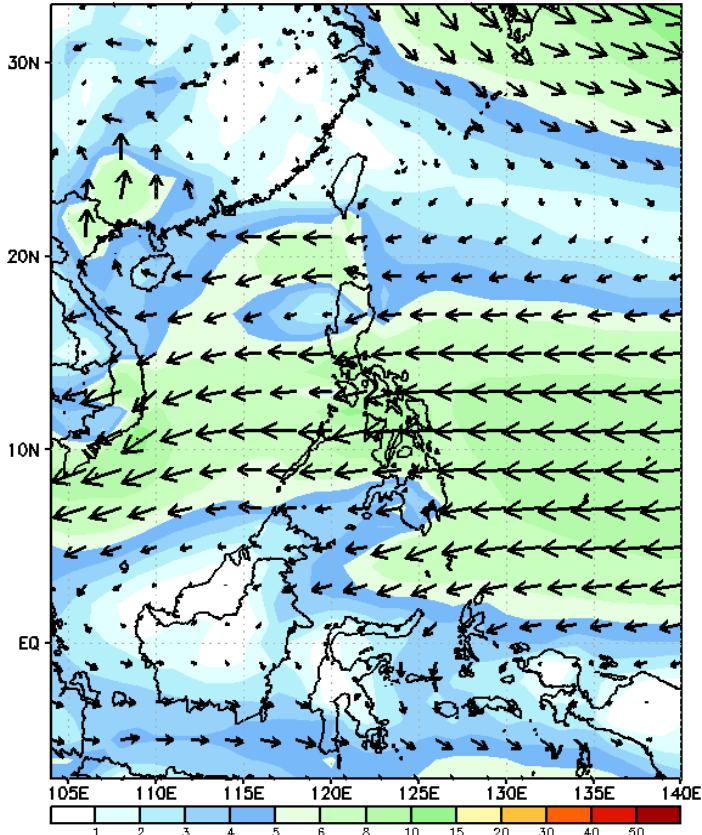
### Probability to Exceed 200mm

- Low across the country

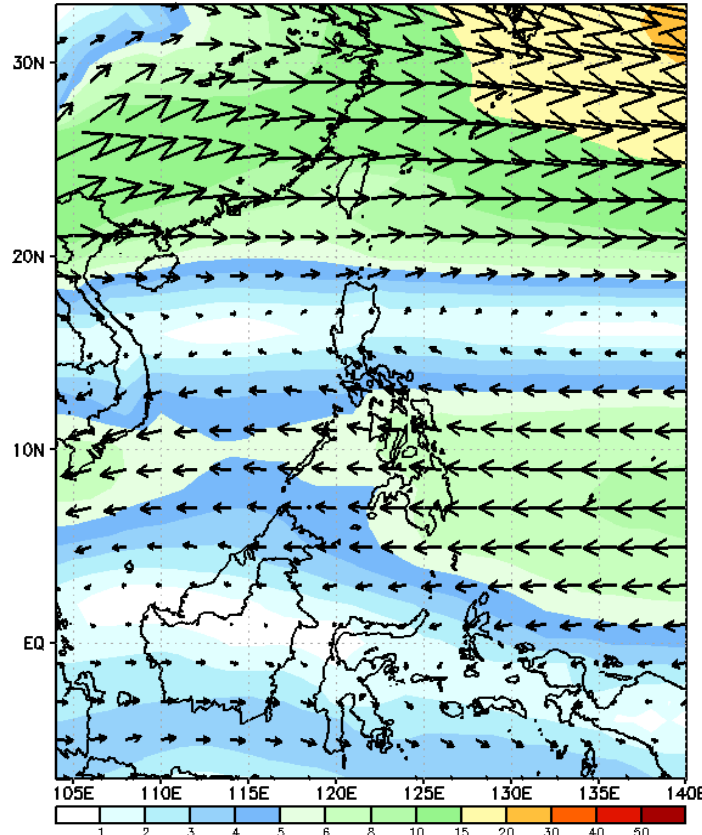
# GEFS Week-2 Wind Forecasts:

Week 2: Feb 19-25, 2025

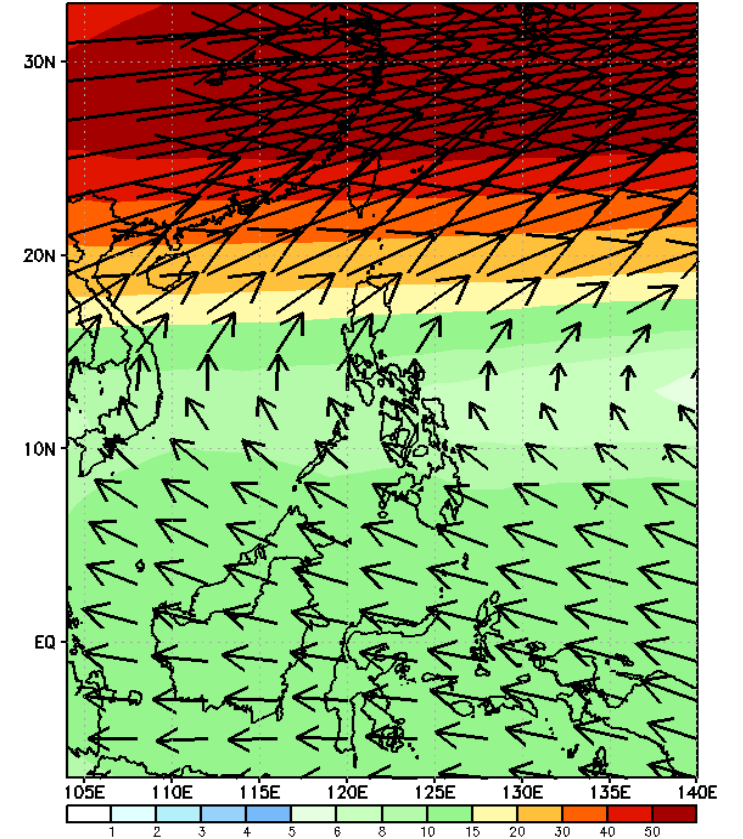
GEFS Week-2 850-hPa Wind Total  
Valid: 20250219 - 20250225



GEFS Week-2 700-hPa Wind Total  
Valid: 20250219 - 20250225

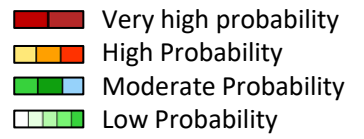


GEFS Week-2 200-hPa Wind Total  
Valid: 20250219 - 20250225



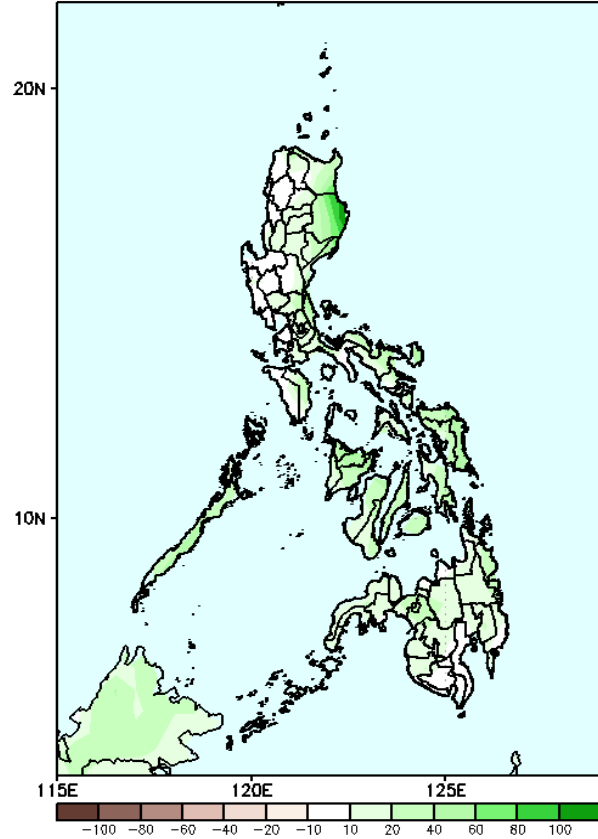
Northeast Monsoon affecting Northern and Central Luzon while Easterlies affecting the rest of the country during the forecast period

# Precipitation Anomaly and Exceedance Probability > 25/50 mm



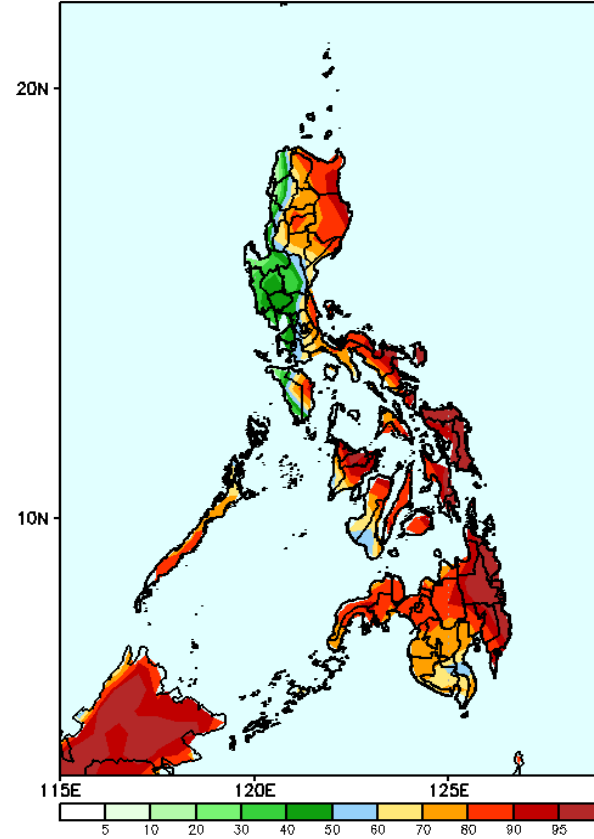
## Week 2: Feb 19-25, 2025

GEFS Week-2 Precip Anomaly  
Valid: 20250219 - 20250225



Increase of rainfall of 10-40mm is expected in most parts of the country.

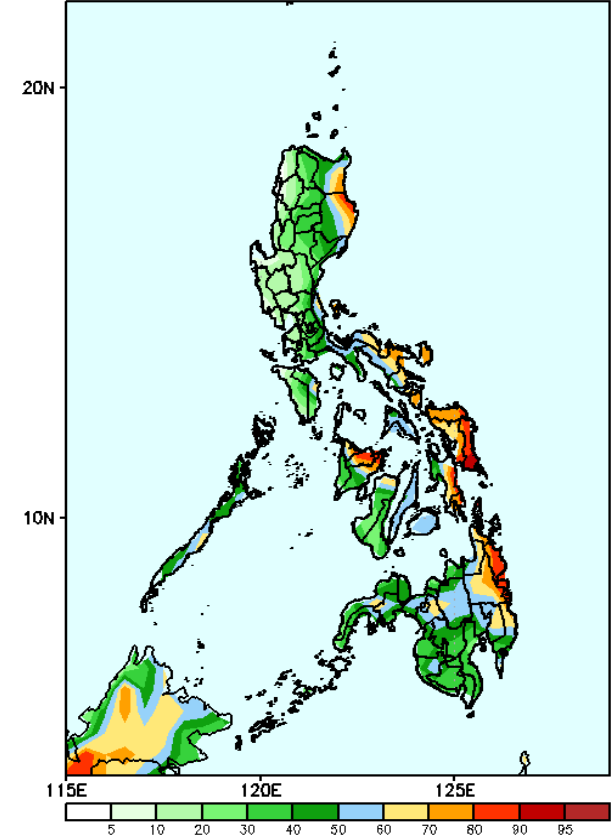
GEFS Week-2 Exceedance Prob. > 25mm  
Valid: 20250219 - 20250225



### Probability to Exceed 25mm

- High to very high over most parts over the eastern parts of the country;
- Moderate to high over the rest of the country;

GEFS Week-2 Exceedance Prob. > 50mm  
Valid: 20250219 - 20250225



### Probability to Exceed 50mm

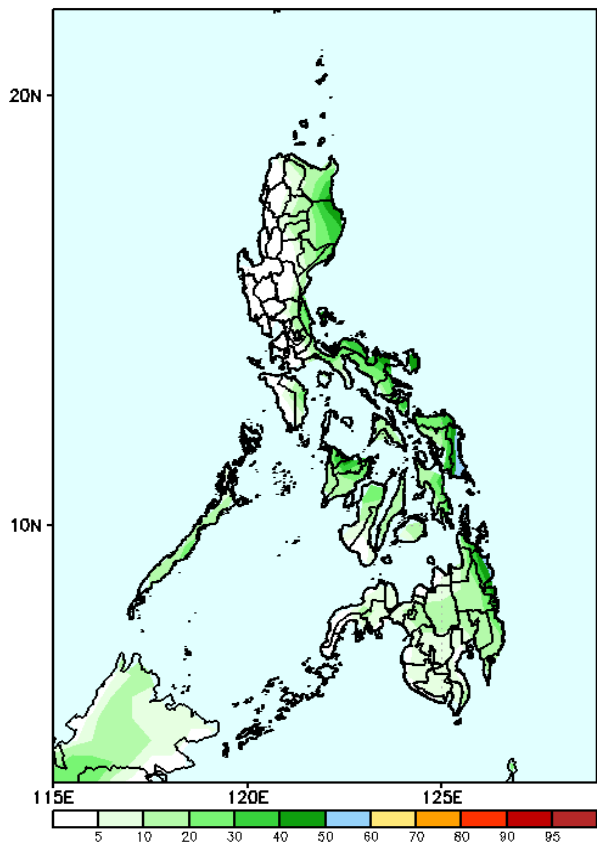
- Moderate to high over Eastern Luzon,, Oriental Mindoro, Panay Isl., northern part of Negros Occidental, Central and Eastern Visayas, and most parts of Mindanao;
- Low to moderate over the rest of the country.

# Exceedance Probability > 100/150/200 mm

- Very high probability
- High Probability
- Moderate Probability
- Low Probability

## Week 2: Feb 19-25, 2025

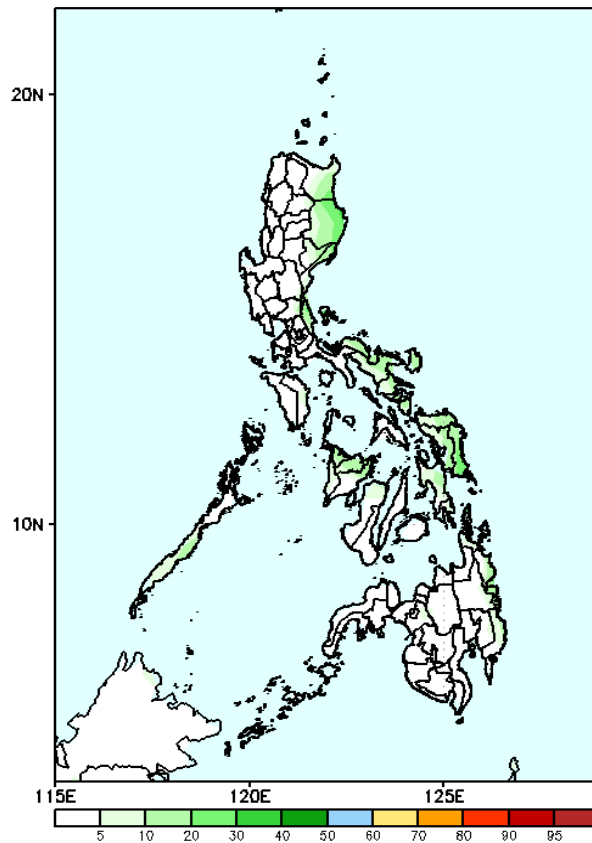
GEFS Week-2 Exceedance Prob. > 100mm  
Valid: 20250219 - 20250225



### Probability to Exceed 100mm

- Moderate over Eastern Visayas;
- Low to moderate over the rest of the eastern part of the country;
- Low over the rest of the country.

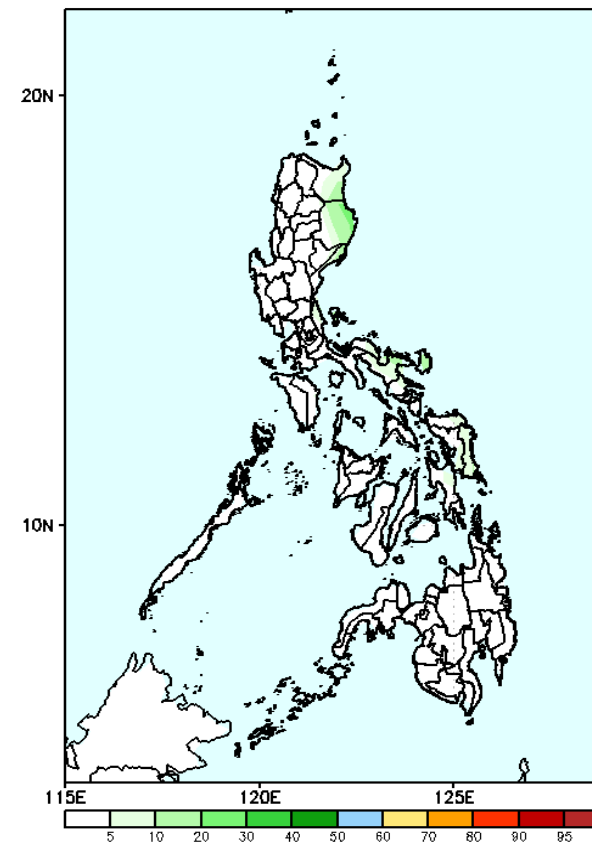
GEFS Week-2 Exceedance Prob. > 150mm  
Valid: 20250219 - 20250225



### Probability to Exceed 150mm

- Low across the country.

GEFS Week-2 Exceedance Prob. > 200mm  
Valid: 20250219 - 20250225

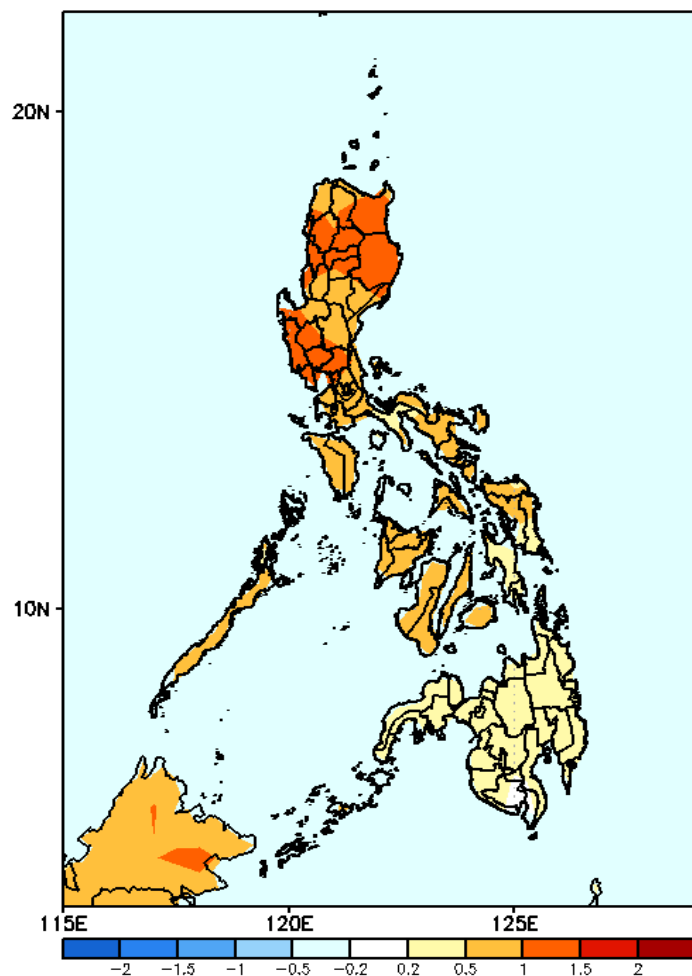


### Probability to Exceed 200mm

- Low across the country.

# GEFS Week-1 & 2 Forecasts: T2m Anomaly

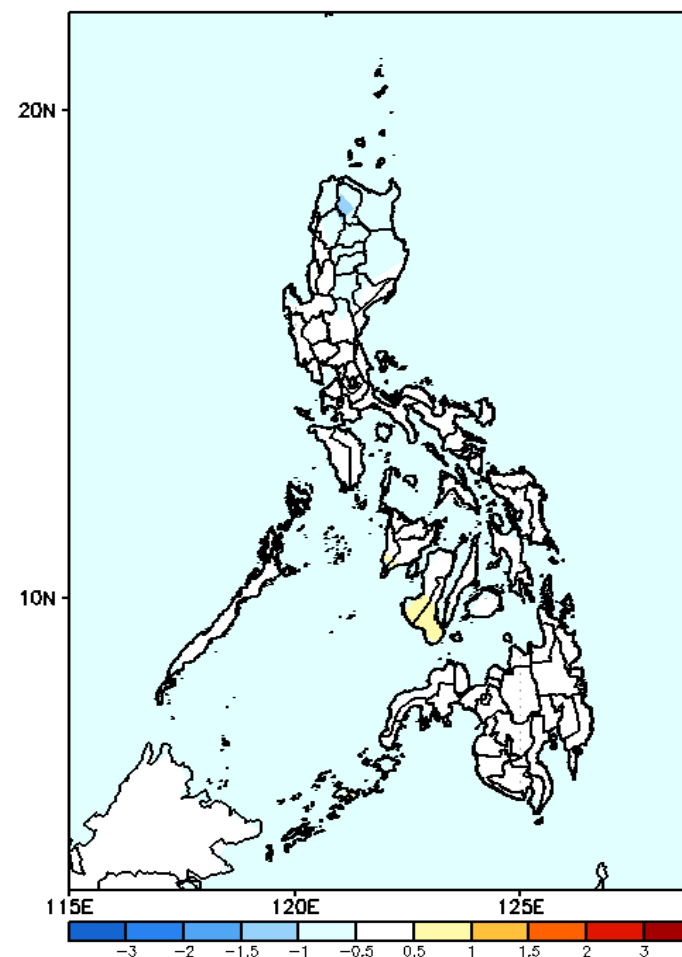
GEFS Week-1 T2m Anomaly  
Valid: 20250212 - 20250218



## 2m Temperature Week 1: Feb 12-18, 2025

Slightly warmer to warmer than average surface air temperature will likely be experienced in most parts of the country.

GEFS Week-2 T2m Anomaly  
Valid: 20250219 - 20250225



## 2m Temperature Week 2: Feb 19-25, 2025

Near to slightly cooler than average surface air temperature will likely be experienced in Luzon while near to slightly warmer than average temperature is expected in Visayas and Mindanao.